

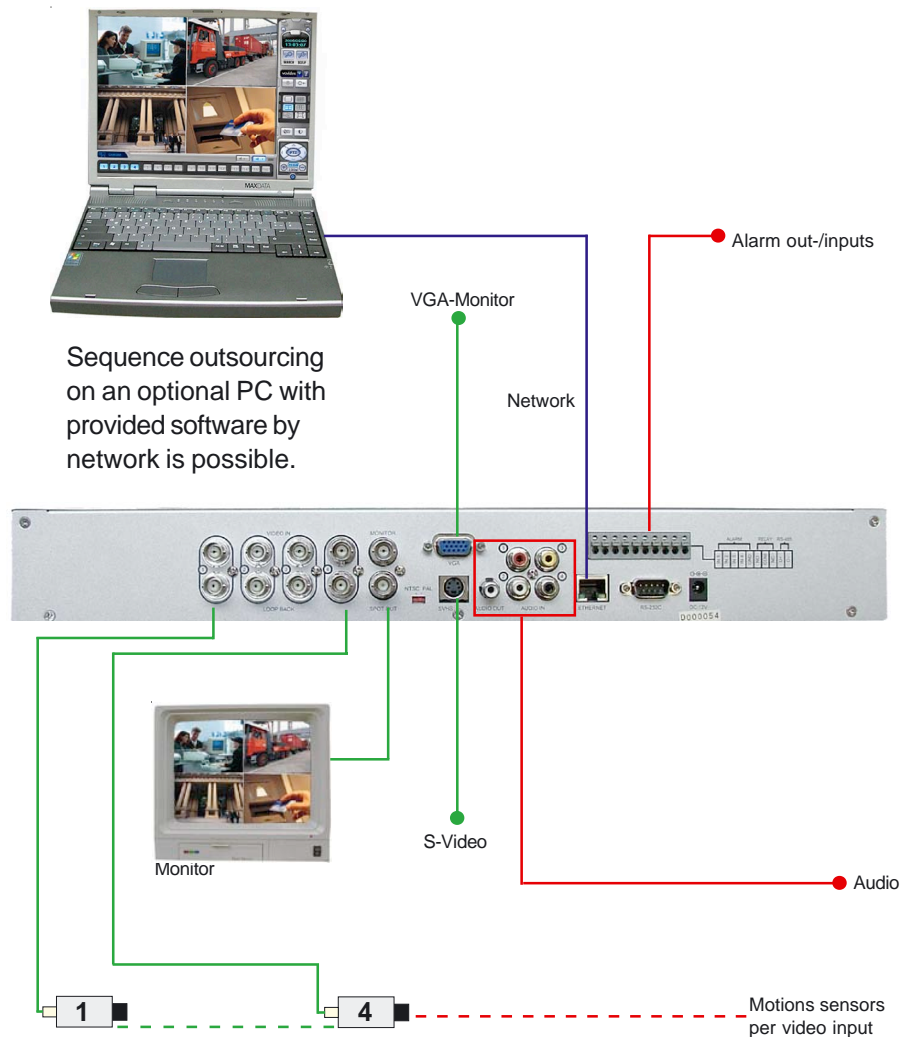
Digital video recorder with 4 video and alarm inputs incl. motion, audio and network, without hard disk

Art. no. 12760 Model name VC-DVR4-MPEG-4-WAN For two internal hard disks and network



VDE CE EMC

Connection establishment



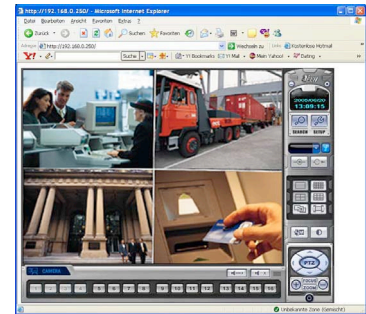
— = control cable — = video cable — = network



Live display of the software



Search display of the software



Access with Internet Explorer

Record time with one 80GB hard disk in hours

Channel / FPS	Resolution	Superior	High	Standard	Basic
4Channel (CIF/25FPS)		41	58	93	154
4Channel (2CIF/13FPS)		37	46	74	123
4Channel (D1/7FPS)		19	23	38	61
4Channel (D1/1FPS)		93	132	154	185

Hinweis: Die angegebenen Zeiten beziehen sich auf Daueraufnahme von hellen Objekten mit viel Bewegung, somit ist es möglich, dass Sie unter normalen Bedingungen bis zu 3-mal länger aufnehmen können.

Technical data

CPU	32bit DSP
HDD	To 2 a 300 GB
Operating system	RTOS
Video inputs	4 PAL/NTSC with loop to outputs
Description speed	max. 100 FPS
Description options	Quad, frame, switching
Recording speed and resolution (4 cameras)	352 x 288 100 FPS 704 x 288 50 FPS 704 x 576 25 FPS
Monitor output	Basic output BNC / S-Video / VGA Spot output BNC
Compression	MPEG 4 (optimised)
Byte per picture	3 - 5 Kb by 352 x 288 5 - 10 Kb by 704 x 288 6 - 16 Kb by 704 x 576
Recording options	Continued, motion detection, alarm
Recording schedule	Weekly or everyday per camera
Motion detection	132 fields per camera adjustable
Audio in- outputs	4 audio inputs, 1 audio outputs
Alarm in- outputs	4 inputs, 1 output
Interface	RS 485
Network	RJ 45 TCP / IP connection
Software access	With software about network and internet
Browser assistance	Internet Explorer to 4 operator at the same time
Protection	About code words 4 level
Backup	About LAN, Internet or CD-RW
Search options	In Zeit/Datum and event
Search speed (local)	To 64-fold forward and reverse
Search options (network)	Direct search in time/date
Search speed (PC) after download	To 200-fold forward and reverse
Measurements (BxHxT)	435 x 60 x 410mm